

Market: **Means of Transport**
Object: **NEW ELASTJOINT 2 - Cold Sealing Procedure**

NEW ELASTJOINT 2

- Suitable for joints in floors and walls areas
- Free of silicone, paintable
- Permanently elastic, extremely elastic and tear-proof
- Free of isocyanate and solvents
- Resistant to all conventional cleaning and disinfection agents
- Basic compound tested and approved for use near food processing areas
- Mould-resistant and anti-fungal
- No damage from walking over or wheelchair use.

Product descriptions and applications.

NEW ELASTJOINT 2 is a one-component aesthetic/elastic joint filler made from MS polymers. The product has been specifically designed for the sealing of joints in walls and floors. Thanks to its wear-resistance surface, **NEW ELASTJOINT 2** is extremely resistant against dirt and conventional cleaning and disinfection agents. After curing, **NEW ELASTJOINT 2** can be walked on and driven over by wheelchairs. The product is particularly suitable for the sealing of butt joints, seams, corner joints, door frames, saddles and skirting boards. The product is also recommended for the sealing of joints in parquet, laminate, stone, ceramic and timber floors as well as in interior aluminium/steel structures.



Take note.

- **Adhesive surfaces must be permanently clean and stable, dry, dust-free, and they shall not be contaminated by grease, paraffin or any other substances which might impair adhesive capacities.**
- For cleaning joints, use an acetone based detergent or similar cleaning agent.
- Cut open cartridge above joint and screw on nozzle.
- Cut nozzle to desired joint size. Inject material evenly into joint, spray with our Finisher spray, and smooth as desired with spatula or small trowel (Fugenfix available separately). You may also fine-shape the joint with your finger; be sure to wet it with Finisher smoothing agent.
- Smooth surfaces as a general rule will not need to be taped or waxed; this should however be done by persons not skilled in this work or if surfaces are uneven or rough.
- **Any excess material should be immediately removed with cleaning agent while still soft.**

Consumption.

- To produce a joint of 3 by 3 mm is ± 16 ml/m (about 18 m).
- Be sure to check color and compatibility before using; any later complaints about deviations will not be accepted.
- Restrictions in use: avoid any contact with materials containing bitumen or softeners e.g. insulating paints and black finishing. Use only in well-lit rooms; extensive darkness may lead to discoloration. Prolonged shielding from light such as covering with tarpaulins, etc. can cause discoloration.

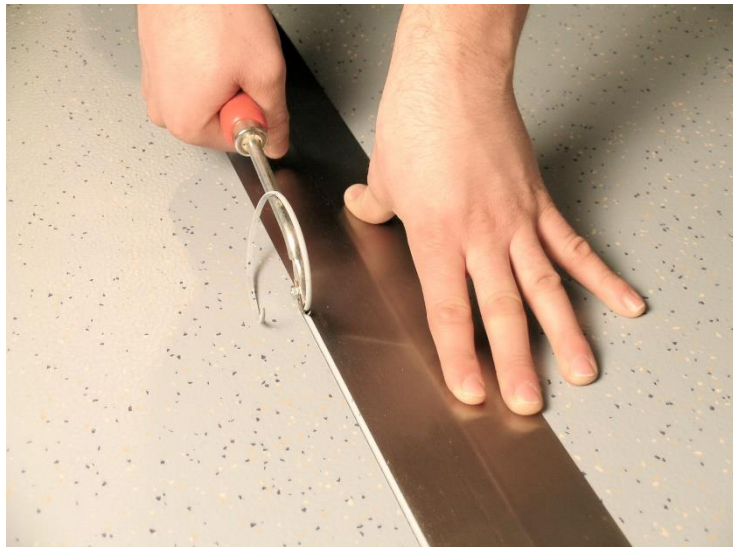
Storage and shelf life.

- May be stored in dry and cool location for at least twelve months in sealed packaging.

Packaging/Colors.

- Available in any color; min 1 box = 12 cartridges; approx. 320-330 g / cartridge.

Application.



1 - Grind Joints

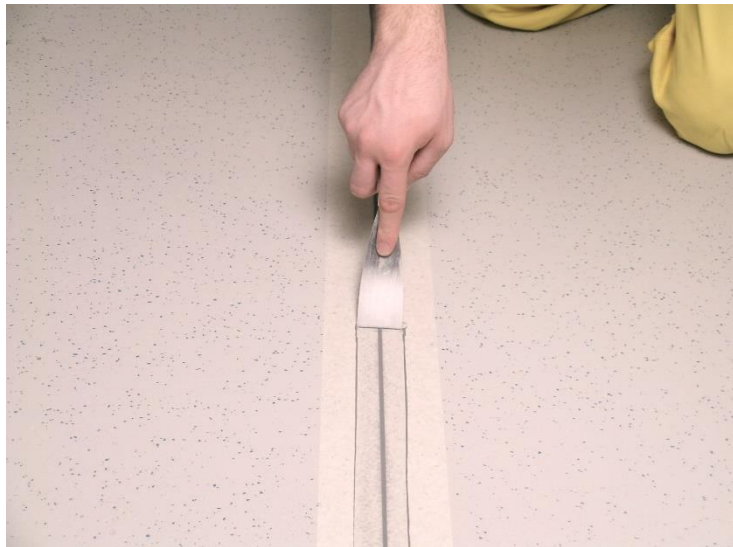


2 - Protect the edges with masking tape



3 - Apply NEW ELASTJOINT 2 inside the joint

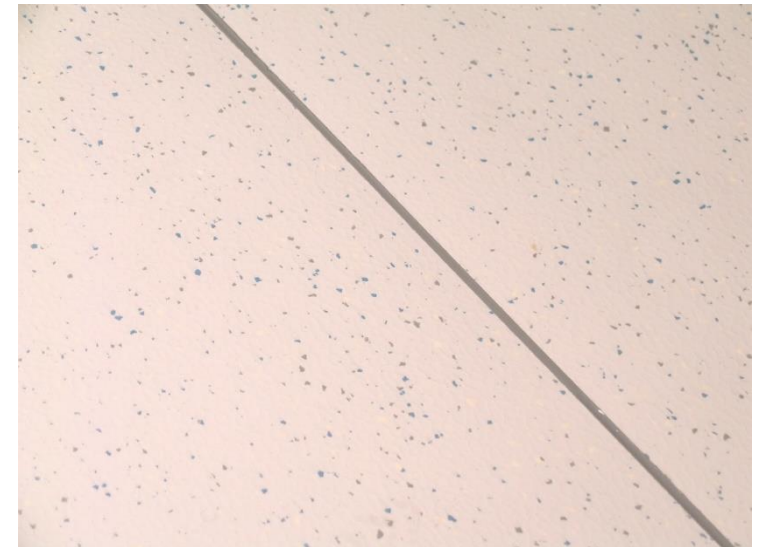
Application.



4 - Spread with spatula



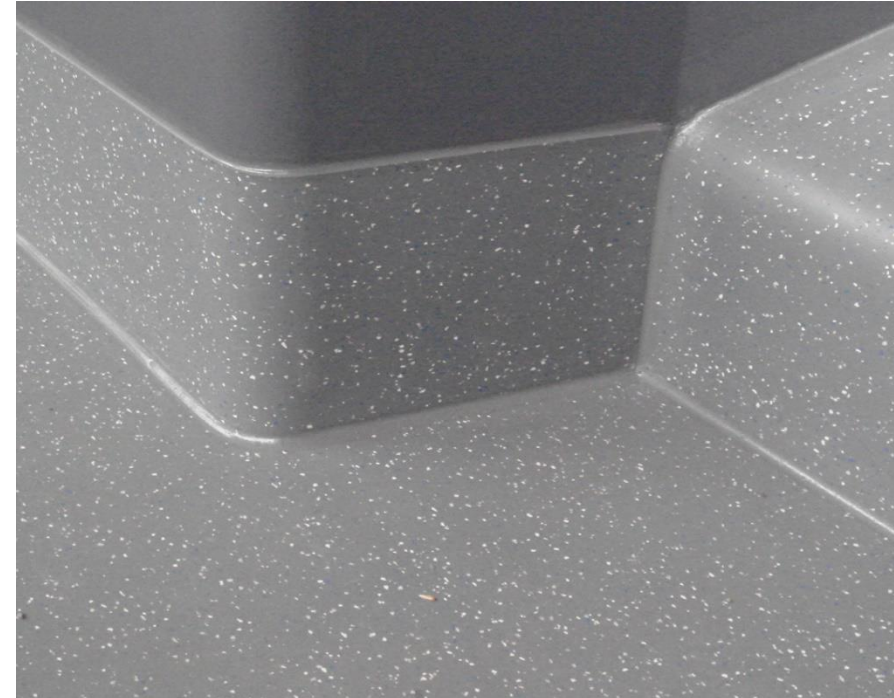
5 - Remove the paper tape



6 - The result

- **Cleaning or smoothing is not possible after material has hardened.**

Application.



7 - Corners and vertical application.

- **Walkable after 8÷10h**

Artigo Spa

Headquarters

Loc. Carpeneto
17014 Cairo Montenotte (SV) ITALY
Tel: +39 019509011
Fax: +39 019505513

Sales office

Via Cascina Vione 3
20080 Basiglio (Mi) Italy
Tel: +39 0290786415
Fax: +39 0290786449

Mondo Luxembourg S.A.

Rue de l'Industrie
L-3895 Foetz, LUXEMBOURG
Tel. +352 574457.304
Fax +352 557693

www.artigo-transport.com